

**RESOLUTION OF  
THE SCHOOL BOARD OF SARASOTA COUNTY, FLORIDA  
RE: ELEMENTARY SCHOOL I  
DEDICATION OF PROPERTY TO CITY OF NORTH PORT**

WHEREAS, The School Board of Sarasota County, Florida (the “Board”), previously authorized acquisition of property within the Sixteenth Addition and Twenty-First Addition to Port Charlotte Subdivision (located within the City of North Port, Florida) for the purpose of constructing an elementary school thereon; and

WHEREAS, the staff and counsel for the Board proceeded with the acquisition of the property and the development of construction plans for the new elementary school;

WHEREAS, it has been determined that the property should be platted to provide a uniform site for the elementary school campus;

NOW, THEREFORE, BE IT RESOLVED by The School Board of Sarasota County, Florida, in public meeting assembled:

1. The Board hereby approves, in substantially similar form, the plat for Elementary School I in North Port, attached hereto as Exhibit “A” (the “Plat”), and all dedications referenced thereon;
2. The Board authorizes the Chairman to execute the Plat and authorizes staff and counsel, in their discretion, to take all steps necessary to effectuate the platting of the property.
3. This Resolution shall take effect immediately upon its adoption.

ADOPTED this \_\_\_\_\_ day of \_\_\_\_\_ 2008.

**THE SCHOOL BOARD OF  
SARASOTA COUNTY, FLORIDA**

ATTEST: \_\_\_\_\_  
GARY W. NORRIS  
As Ex-Officio Secretary and  
Executive Officer

BY: \_\_\_\_\_  
Dr. KATHY KLEINLEIN  
As Chairman

ELEMENTARY SCHOOL I IN NORTH PORT
A REPLAT OF PORTIONS OF THE SIXTEENTH ADDITION TO
PORT CHARLOTTE SUBDIVISION (PLAT BOOK 13, PAGE 15),
AND PORTIONS OF THE TWENTYFIRST ADDITION TO
PORT CHARLOTTE SUBDIVISION (PLAT BOOK 14, PAGE 9),
LYING IN SECTIONS 21 AND 22, TOWNSHIP 39 SOUTH, RANGE 22 EAST,
CITY OF NORTH PORT
SARASOTA COUNTY, FLORIDA

NOTICE: This plat, as recorded in its graphic form, is the official depiction of the subdivided lands described herein and will in no circumstances be superceded in authority by any other plat or map of the same or any part thereof. There may be additional information in the public records of this county.

1. Easements shown hereon are relative to National Geographic Vertical Datum (NGVD) of 1929 based on the National Tidal High Water Management District Bench Mark #3-21, with a presumed elevation of 24.84.

2. Boundaries shown hereon are arbitrary and are based on the west right-of-way line of Atlantic Drive having a bearing of S.000°11.6'W, and do not refer to the true meridian.

3. The boundary description is on sheet 4. This site contains 35,530 acres, more or less.

EASEMENT DESCRIPTIONS:

PUBLIC UTILITY EASEMENTS:

The School Board of Sarasota County (the "School Board") does hereby grant nonexclusive utility easements to the City of North Port, Florida, for the installation, construction, maintenance, and operation of underground gas, telephone, water, sewer, electric, cable television, and other utilities.

PUBLIC DRAINAGE EASEMENTS:

The School Board does hereby grant nonexclusive drainage easements to the City of North Port for stormwater drainage purposes over, under, and across each area depicted on this plat as a "Public Drainage Easement."

PUBLIC MAINTENANCE EASEMENTS:

The School Board does hereby grant nonexclusive easements to the City of North Port for maintenance of drainage canals over and across each area depicted on this plat as a "Public Maintenance Easement."

CITY ATTORNEY APPROVAL:

I, the undersigned, as City Attorney, for the City of North Port, Florida, certify that I have examined and approved this Plat, this \_\_\_ day of \_\_\_ A.D., 2008.

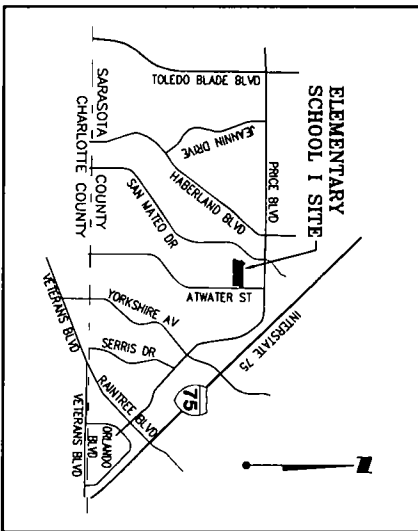
By: City Attorney, City of North Port

CERTIFICATE OF SURVEYOR:

I, the undersigned Licensed Professional Surveyor and Mapper, hereby certify that this plat is a true and correct representation of the lands surveyed, that the survey and plat was prepared under my responsible direction and supervision, that the survey data complies with the requirements of Chapter 177, Part 1, Florida Statutes and that the Permanent Reference Measurements (PrMs) and Bench Marks have been established as of April 18, 2008.

WESONMILLER, INC. (B)(9)(4)
6900 Professional Parkway East
Sarasota, Florida 34240-8414 (341) 907-6800

By: James W. Brunson, P.E.S.M., No.3041
Date of Signature



CERTIFICATION OF OWNERSHIP AND DEDICATION:

The School Board of Sarasota County, by its Chairman, acting by and with the authority of its members, certifies ownership of the property described on this plat, and does hereby dedicate this plat of Elementary School I and set apart:

PRIVATE:

The utility easements shown and described on this plat for said uses and purposes to authorized utility companies providing electric, gas, telephone, water, sewer, electric, cable television, and other utilities to the addressee, such dedications being subject to any rights dedicated to the City of North Port by this plat and

PUBLIC:

Tract A, Tract B, Tract C, Tract D, and all public maintenance, public drainage, and other public easements shown and described on this plat for the uses and purposes stated in the easement descriptions shown hereon to the City of North Port forever.

IN WITNESS WHEREOF, the undersigned School Board of Sarasota County has caused these presents to be executed by the Chairman, this \_\_\_ day of \_\_\_ 2008.

Signed, sealed and delivered in the presence of:

Witness signature: Witness signature
Print Name: Print Name

The School Board of Sarasota County, Florida

By: Dr. Kathy Kiehlen, Chairman

STATE OF FLORIDA ) SS
COUNTY OF SARASOTA )

SWORN TO AND SUBSCRIBED before me this \_\_\_ day of \_\_\_ 2008, by Dr. Kathy Kiehlen, on behalf of said entity, who is personally known to me.

Notary Public, State of Florida

CERTIFICATE OF APPROVAL OF THE CITY OF NORTH PORT PLANNING AND ZONING ADVISORY BOARD:
STATE OF FLORIDA )
COUNTY OF SARASOTA ) SS
I, hereby certify that this plat has been officially approved for record this \_\_\_ day of \_\_\_ 2008.

City of North Port Planning and Zoning Advisory Board

By: Theodore A. Allen, Chair

CERTIFICATE OF APPROVAL OF SURVEYOR REVIEWING PLAT FOR THE CITY OF NORTH PORT, FLORIDA
I hereby certify that I have reviewed this plat and in my opinion it conforms with the requirements of Chapter 177, Part 1, Florida Statutes.

Date: Signature

CERTIFICATE OF APPROVAL OF CITY COMMISSION
STATE OF FLORIDA )
COUNTY OF SARASOTA ) SS

Alon K. Trab, P.E.S.M.
Registration No. 3941

I hereby certify that this plat of "Elementary School I in North Port" and the location of all lots, blocks, streets, utility easements, drainage rights-of-way and drainage maintenance easements as previously platted in a portion of the Sixteenth Addition to Port Charlotte and the Twentyfirst Addition of Port Charlotte contained within this plat, has been approved by the City Commission of the City of North Port, Florida.

By: Fred E. Traver, III
Chair of the City Commissioners

Attest: Helen Rabinow
City Clerk
Date Approved: \_\_\_\_\_

CERTIFICATE OF APPROVAL OF THE CITY ENGINEER

I hereby certify that I have reviewed this plat and in my opinion it conforms with Chapter 37, Subchapter Regulations of the City of North Port's Unified Land Development Code, Ordinance No. 90-2E.

Date: Patrick S. Collins, City Engineer
Registration No. \_\_\_\_\_

CERTIFICATE OF APPROVAL OF COUNTY CLERK

STATE OF FLORIDA )
COUNTY OF SARASOTA ) SS

I, Karen E. Guehling, County Clerk of Sarasota County, Florida, hereby certify that this plat has been examined and that it complies in form with all the requirements of the Statutes of Florida pertaining to maps and plats, and that this plat has been filed for record in Plat Book \_\_\_\_\_ of the Public Records of Sarasota County, Florida, this \_\_\_ day of \_\_\_ A.D., 2008.

Karen E. Rusing
Clerk of the Circuit Court
Sarasota County, Florida
By: Deputy Clerk

WILSONMILLER

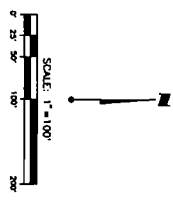
Project Number: S2711-051-000
Task Code: MAP/LT
Project Number: S2711-051-000



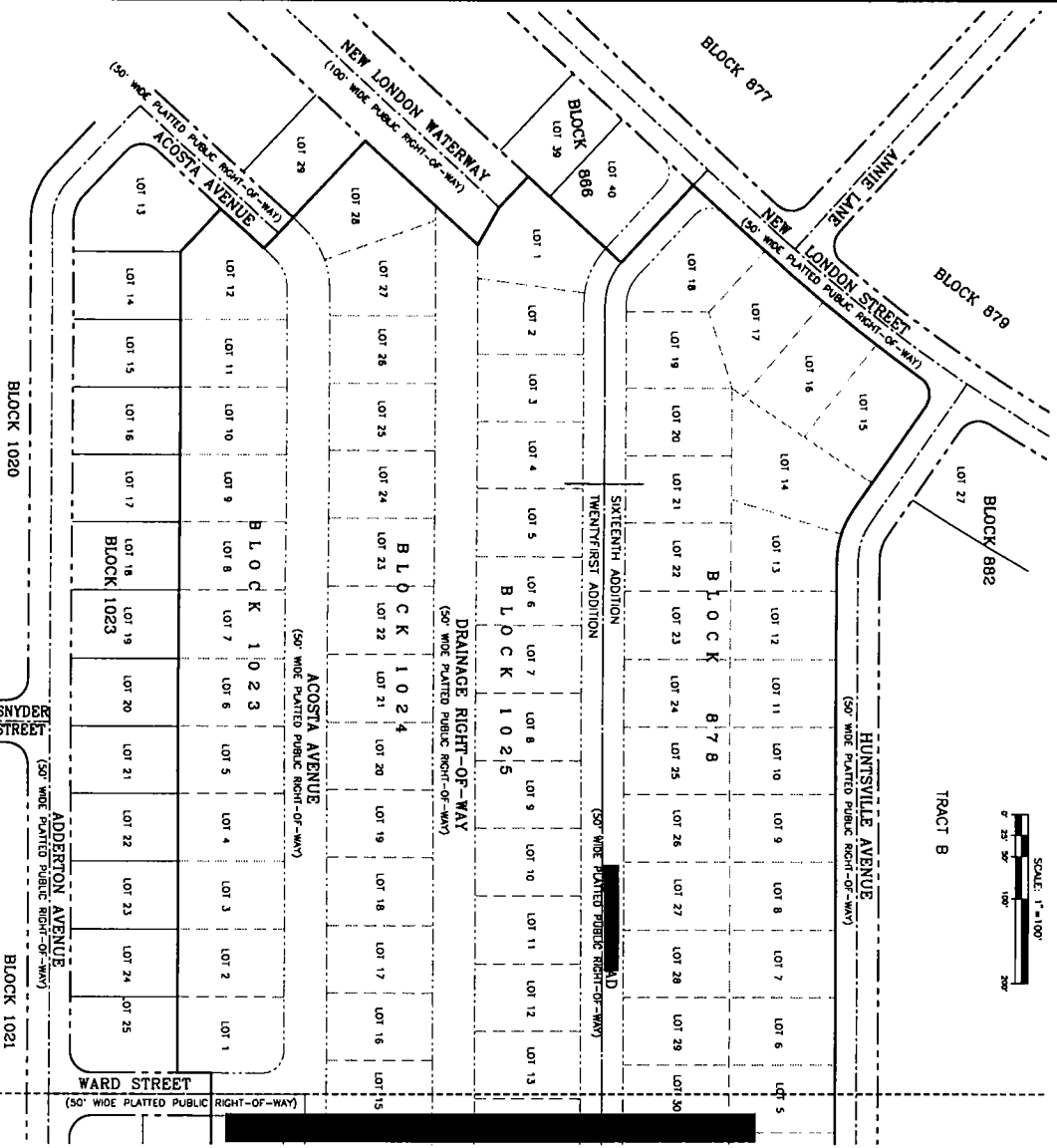
# ELEMENTARY SCHOOL 1 IN NORTH PORT

A REPLAT OF PORTIONS OF THE SIXTEENTH ADDITION TO PORT CHARLOTTE SUBDIVISION (PLAT BOOK 13, PAGE 15), AND PORTIONS OF THE TWENTYFIRST ADDITION TO PORT CHARLOTTE SUBDIVISION (PLAT BOOK 14, PAGE 9), LYING IN SECTIONS 21 AND 22, TOWNSHIP 39 SOUTH, RANGE 22 EAST, CITY OF NORTH PORT, SARASOTA COUNTY, FLORIDA

PLAT BOOK . PAGE  
SHEET 3 OF 5



- LEGEND**
- RIGHT-OF-WAY
  - VACATED RIGHT-OF-WAY
  - LOT LINES
  - VACATED LOT LINES
  - CENTERLINE



**KEY MAP SHOWING LOTS AND STREETS VACATED BY THIS PLAT, IN PORTIONS OF THE SIXTEENTH ADDITION TO PORT CHARLOTTE SUBDIVISION (PLAT BOOK 13, PAGE 15) AND THE TWENTYFIRST ADDITION TO PORT CHARLOTTE SUBDIVISION (PLAT BOOK 14, PAGE 9)**

TWENTYFIRST ADDITION TO PORT CHARLOTTE SIXTEENTH ADDITION TO PORT CHARLOTTE

**NOTE:**  
FROM THE RECORDED PLAT OF THE SIXTEENTH ADDITION TO PORT CHARLOTTE SUBDIVISION (PLAT BOOK 13, PAGE 15) AND THE TWENTYFIRST ADDITION TO PORT CHARLOTTE SUBDIVISION (PLAT BOOK 14, PAGE 9), THE LOT LINES ADJACENT TO ALL CANALS AND WATERWAYS, A 10 FOOT EASEMENT AT THE REAR OF EACH LOT AND A 6 FOOT EASEMENT AT EACH SIDE LOT LINE AND THE TWENTYFIRST ADDITION TO PORT CHARLOTTE SUBDIVISION (PLAT BOOK 14, PAGE 9) AND THE SIXTEENTH ADDITION TO PORT CHARLOTTE SUBDIVISION (PLAT BOOK 13, PAGE 15) ARE REPLATED AS SHOWN HEREON. THE RECORDED PLAT OF THE SIXTEENTH ADDITION TO PORT CHARLOTTE SUBDIVISION (PLAT BOOK 13, PAGE 15) AND THE TWENTYFIRST ADDITION TO PORT CHARLOTTE SUBDIVISION (PLAT BOOK 14, PAGE 9) ARE REPLATED AS SHOWN HEREON. THE RECORDED PLAT OF THE SIXTEENTH ADDITION TO PORT CHARLOTTE SUBDIVISION (PLAT BOOK 13, PAGE 15) AND THE TWENTYFIRST ADDITION TO PORT CHARLOTTE SUBDIVISION (PLAT BOOK 14, PAGE 9) ARE REPLATED AS SHOWN HEREON. THE RECORDED PLAT OF THE SIXTEENTH ADDITION TO PORT CHARLOTTE SUBDIVISION (PLAT BOOK 13, PAGE 15) AND THE TWENTYFIRST ADDITION TO PORT CHARLOTTE SUBDIVISION (PLAT BOOK 14, PAGE 9) ARE REPLATED AS SHOWN HEREON.

**NOTES:**  
1. BEARINGS SHOWN HEREON ARE ARBITRARY AND ARE BASED ON THE WEST RIGHT-OF-WAY LINE OF ALWAYNE DRIVE HAVING A BEARING OF S00D11.15'W. AND DO NOT REFER TO THE TRUE MERIDIAN.  
2. ELEVATIONS SHOWN HEREON ARE RELATIVE TO THE NATIONAL GEODETIC VERTICAL DATUM (NGVD) OF 1929 BASED ON SOUTHWEST FLORIDA WATER MANAGEMENT DISTRICT BENCH MARK 73-21, WITH A PUBLISHED ELEVATION OF 24.64'.  
3. SECTION LINE LOCATION WAS TAKEN FROM THE PLAT OF THE SIXTEENTH ADDITION TO PORT CHARLOTTE SUBDIVISION (PLAT BOOK 13, PAGE 15) AND THE TWENTYFIRST ADDITION TO PORT CHARLOTTE SUBDIVISION (PLAT BOOK 14, PAGE 9).



